

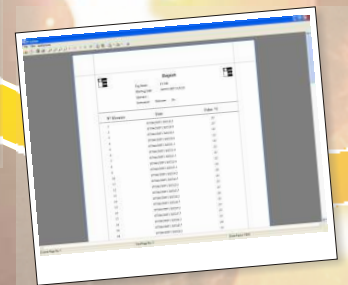
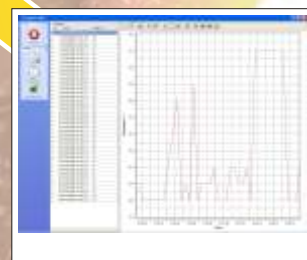
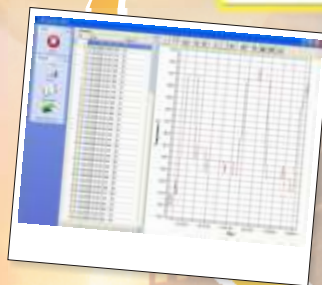
IRLogMan 2007

Datalogging Software for **IRtec** Thermometers



INFRARED THERMOMETERS

- ▶ Automatic or Manual Datalogging
- ▶ Multiple Datalogging for **IRtec** Rayomatic 14
- ▶ Graphic Module
- ▶ Data Export in different file formats
- ▶ Measures/Tags Download
- ▶ Tags Upload
- ▶ Preset Customizable Emissivity Table



Introduction

The last generation of Infrared sensors and transmitters includes advanced electronic technologies. This technology allows to improve the standard temperature measurements with temperature processing capability. IRLogMan 2007 software package has been developed to be used for configuring the **IRtec P** and **IRtec MicroRay** portable infrared thermometers. The Software allows viewing, graphing, exporting and reporting the measure.

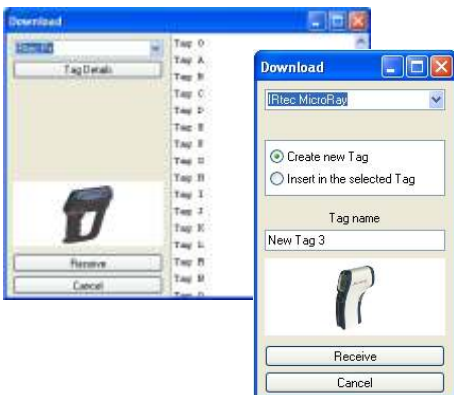
■ Main Features

IRLogMan 2007 can run automatically with all Eurotron portable IR thermometer. The following list show the compatible instruments for this software revision.

IRLogMan 2007 software package enables users to create unique databases designed to manage measure with your specific equipment lists and their associated diagnosis and repair recommendations. Create multiple lists and upload unique lists to **IRtec** thermometer that cover planned inspections or locations. Easy to use and simple to load with your facilities equipment information, IRLogMan 2007 automatically uploads the active data logger files to **IRtec** thermometer.

■ Data Download

With this feature you can download memories (stored values) from the **IRtec P** or **MicroRay** thermometers to a selected Tag on the software

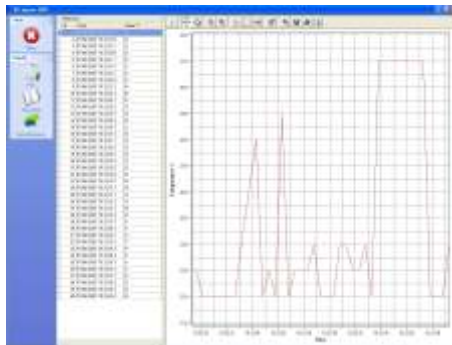


Instruments Compatibility

IRtec P500+ IRtec MicroRay Xtreme
 IRtec P800+ IRtec MicroRay FOOD+ / ++
 IRtec P1000+ IRtec MicroRay AUTO+
 IRtec P1300+ IRtec MicroRay HVAC+ +
 IRtec P1600+ Rayomatic14 RS485
 IRtec P2000+
 IRtec P3000+

■ Datalogging

With this feature you can data log the temperature values from the portable thermometer to the selected Tag. If the Tag preference do not include the Data log, you can perform a manual acquisition only. For automatic data logging, Tag preferences should include Data logging information.



■ Multiple Datalogging (IRtec Rayomatic 14 only)

The software is able to perform a multiple data logging if you have more than one instrument. The Rayomatic 14 model can be also connected using its RS485 interface in order to simultaneously send the measurements to the computer. In this case a different address for each instrument has to be set.

Minimum System Requirements

- Windows™ 98/2000/XP Operating System
- Intel Pentium II or Advanced Micro Devices (AMD) processor or superior
- 256MB RAM;
- 150 Mbyte free hard-disk space
- CD-ROM drive
- Dual RS232 serial port

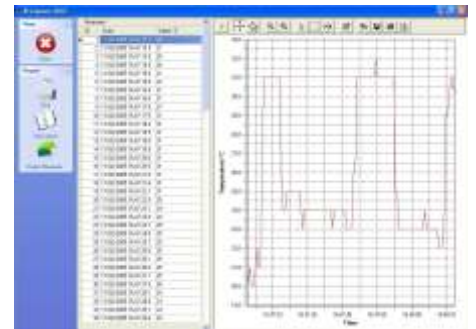
■ Preset Emissivity Table (IRtec P Series only)

At first run the software is provided with a manageable emissivity table. The default stored emissivity values are grouped into two groups: the metals and non-metals. This feature allows you to organize your customized table with the emissivity values that your work require. You can send the stored value directly to the instrument by using the USB port and the supplied cable.

Material	Long name	Emissivity value
Aluminum Oxide	Aluminum Oxide	0.3
Aluminum Oxide	Aluminum Oxide	0.3
Brass	Brass	0.5
Carbon	Carbon	0.8
Chromium	Chromium	0.71
Copper	Copper	0.86
Graphite	Graphite	0.8
Iron-Ni	Iron-Ni	0.3
Iron-O	Iron-O	0.6

■ Graphic Module

The software allows you to generate a graphic for each data acquisition



■ Print Reports

The software generate a report that you can print or export in a standard type file format for subsequent reading and/or analysis.

Tag	Date	Value
Tag 1	10/10/2007	100.0
Tag 2	10/10/2007	100.0
Tag 3	10/10/2007	100.0
Tag 4	10/10/2007	100.0
Tag 5	10/10/2007	100.0
Tag 6	10/10/2007	100.0
Tag 7	10/10/2007	100.0
Tag 8	10/10/2007	100.0
Tag 9	10/10/2007	100.0
Tag 10	10/10/2007	100.0